



Cycling BC SafeSport and Coach Excellence Policy

Effective Date:

January 1st, 2023

Last Revised:

February 5th, 2023 (Ben Chaddock)

Maintained by:

Cycling BC Head of Coach Development, coaching@cyclingbc.net

Policy Purpose:

The policy is intended to,

1. Protect participants in cycling sports and create a better overall sports experience by ensuring that those in leadership positions uphold the highest standards of competence, ethical conduct, and practices for part-time and career coaches.
2. Provide a clear coach education pathway.
3. Increase the number and quality of professional coaches in British Columbia.

Policy Statement:

Cycling BC believes that creating positive sports experiences is paramount to the growth and success of our sport. Therefore, Cycling BC has established and is enforcing this policy for individual members and affiliated clubs in leadership positions, including coaches, to drive and strengthen education, development, safety, and competitive results, and to create a better overall experience for coaches and participants in our sport.

Cycling BC members, clubs, teams, and affiliated businesses operating under Cycling BC's insurance program are subject to Cycling BC's SafeSport and Coach Excellence (SSCE) Policy. This document may also serve as a guide to all youth and adult cycling coaching in BC.

Definitions:

Key terms used in this policy:

Leaders mean someone in a position to lead others in cycling activities, including but not limited to coaches, instructors, ride leaders, trainers, mentors, directors, and managers.

Registered activities mean events or activities sanctioned or registered with Cycling BC.

Cycling BC Coach Management System is the online database used by Cycling BC to compile and track coach credentials, non-NCCP certifications, first-aid, and background checks.

Coach Registry means the public-facing webpage displaying all Cycling BC members with updated and valid leadership credentials (cyclingbc.net/coachregistry)

NCCP is the National Coaching Certification Program delivered in partnership with Cycling BC, Cycling Canada, viaSport, and the Coaching Association of Canada.

PMBIA is the Professional Mountain Bike Instructors Association.

LOCKER System is the Coaching Association of Canada's online system to access, manage, and maintain coach records of completed courses, certifications, eLearning, and events.

SafeSport means policies aimed at addressing the maltreatment of individuals in sports. These policies align with national and provincial policies, including the [BC Universal Code of Conduct](#).

Rule of Two means all interactions and communications with participants are in open, observable, and justifiable settings, and two responsible adults, whether a coach, parent, staff or screened volunteer, are present.

Policies:

1. [UCI Technical License Requirement](#)

Cycling BC requires all ride leaders, instructors, trainers, mentors, managers, coaches, commissaires, and other staff hold a UCI Technical license for the current calendar year to access Cycling BC's general liability coverage during registered activities.

2. [Cycling BC Leadership Certificate Requirement](#)

Cycling BC requires all leaders operating under Cycling BC's insurance coverage to attain and maintain an accreditation level matching the cyclists under their care.

- **Chaperone** (WHITE) Provide passive support at any activity
- **Ride Leader** (MAROON) Lead adult club rides
- **Active Start Instructor** (RED) Instruct BCCC's Kids on Wheels program
- **HopOn Instructor** (ORANGE) Instruct Cycling BC's HopOn program
- **Club-Assistant Coach** (YELLOW) Instruct club skill-based sessions (any age)
- **Club-Certified Coach** (GREEN) Lead a club, write L2T/T2T fitness plans
- **Performance-Certified Coach** (BLUE) Lead performance & T2C programs
- **Commissaire & Staff** (BLACK) Hold a position of authority at a sanctioned event

Each leadership certificate includes pertinent ethics training, including:

- NCCP Making Ethical Decisions & Online Quiz Evaluation (RED and beyond)
- Commit to Kids: For Coaches elearning module (GREEN)*
- NCCP SafeSport eLearning module (WHITE, BLUE, BLACK)

*Please note, Cycling Canada's NCCP Comp-Intro pathway does not include [Commit to Kids: For Coaches](#), therefore UCI Technical license designation will be awarded without this module. However, complete the module to achieve Cycling BC's Club-Certified GREEN certificate and added to cyclingbc.net/coachregistry.

3. [Commissaires & Technical Staff](#)

Cycling BC requires all commissaires, classifiers, event organizers, team managers, mechanics, soigneurs, drivers, and agents must submit a clear background screening, complete a SafeSport eLearning module, and hold role-specific credentials as per APPENDIX I.

4. Working with participants under the age of 19:

Cycling BC requires all youth clubs to employ, at a minimum:

- 1 NCCP Club-certified (**GREEN**) or Performance-certified (**BLUE**) coach fulfilling the Head Coach or Club/Team Advisor role. *This person mentors Club Assistants and facilitates a healthy club/team culture.*
- All coaches and instructors leading practices must have at least a Club Assistant (**YELLOW**) certificate.

5. Working with participants ages 19 years and older:

Cycling BC recommends adult club ride leaders, 19 years and older, participate in Cycling BC's Ride Leader Training program, achieve certified (**MAROON**) status, and learn how to plan safe group activities.

Cycling BC requires all Learn to Ride and Learn to Race instructors to hold NCCP Club Assistant (**YELLOW**) status. This policy moves our coaching community closer toward a standardized club & performance skills curriculum to create a safer, more welcoming introduction to cycling and cycling in a group for novice riders.

6. Mountain Bike Instructors

All coaches and instructors leading youth practices or adult skills clinics must hold the Club Assistant (**YELLOW**) status.

- ALL leaders must complete the Basic Requirements and Club Theory A.
- PMBIA Level 1 instructors (or equivalent) may forgo one NCCP outdoor practice teaching module. Participate in either Basic or Club Skills at no charge.
- PMBIA Level 2 (and beyond) instructors (or equivalent) may forgo both NCCP outdoor practice teaching modules but may participate for mentorship purposes at no charge.

PMBIA leaders who wish to pursue the Club-Certified (**GREEN**) status (NCCP Competition-Introduction certification) and fulfil the role of Club Head Coach are encouraged to attend NCCP outdoor modules; otherwise, they will have to challenge the NCCP evaluation process to achieve certification – skip to section 10. [Read more about Cycling BC's agreement with the PMBIA.](#)

7. School Teachers

School teachers interested in leading after-school cycling activities may choose between the **ORANGE** and **YELLOW** pathway, and may complete a portion of the pathway by home study.

Elementary school teachers wishing to create an after-school bike club, supported by Cycling BC's HopOn program can pursue the HopOn Instructor (**ORANGE**) certificate. Training includes an on-demand module introducing the HopOn movements and games, an NCCP theory module (Community Theory), and two days outside on our bikes (NCCP Basic Skills, HopOn Orientation).

Middle and secondary teachers interested in leading after-school activities, supported by BC School Sports or by a Cycling BC school club, can pursue the Club Assistant (**YELLOW**) certificate. Training includes an more comprehensive NCCP theory module (Club Theory A), and two days outside specific to your cycle sport of interest (mountain bike, road, etc.)

Cycling BC encourages school teachers to affiliate with Cycling BC as either a HopOn After-school program or a registered Youth Club.

Affiliation provides Sports Accident and Liability Insurance for both instructors and participants. Affiliation also includes access to NCCP Coach training, skills teaching curriculum (HopOn and Club Learn2Ride/Race), equipment and teaching tools (HopOn Backpacks with first aid), and administrative support from Cycling BC (professional emergency action plans, advertising posters, registration and permitting support).

8. Parent Chaperones

All parents or other adults attending practices to optimize adult-to-child ratios (Rule of Two) must hold the Chaperone (**WHITE**) certificate. Parents traveling to competitive events with athletes in a supervisory role must also hold the Chaperone (**WHITE**) certificate.

This certificate includes a Cycling BC Membership, Background Screening (e-PIC), and the SafeSport eLearning module.

9. Home Study

Cycling BC members with extensive cycling experience who cannot attend the regularly scheduled NCCP modules may apply to our Home Study program. Cycling BC will evaluate applications case-by-case and retains the right to decline any application. Apply by email to coaching@cyclingbc.net.

- Ride Leader Training
- Community Theory (officially titled NCCP Cycling Practice Planning)
- Club Theory A (officially titled NCCP Skills and Tactics Theory)
- Club Theory B (officially titled NCCP Training to Race)

10. Club Certification Challenge

Leaders with NCCP education from another sport, including NCCP multi-sport modules or international coach education, may apply to CHALLENGE the Club Coach leadership pathway.

A challenge includes the Making Ethical Decisions Quiz, submitting your coach portfolio, and passing an Online Quiz. Fees apply. Leaders with **YELLOW** status by way of PMBIA certification who wish to pursue the **GREEN** certificate must do so by officially challenging.

11. Module Audit

To foster mentorship opportunities, any Cycling BC member who has achieved a leadership certificate may return to repeat any previous module or, for Club-Certified coaches, an outstanding Club Skills module free of charge*, space permitting.

Please request a discount code via email to coach@cyclingbc.net. Registration for module audit participants opens 7 days before the event. **Not applicable for privately scheduled events.*

12. Compliance and Enforcement

Cycling BC members, clubs, teams, and affiliated businesses operating under Cycling BC's insurance program are subject to Cycling BC's SafeSport and Coach Excellence (SSCE) Policy. However, this document may serve as a guide to all youth and adult cycling coaching in BC.

Individuals and organizations NOT in compliance will be notified and subject to the following:

1st Notification: Non-compliance letter

- Individuals found fulfilling roles beyond the scope of their credentials will receive an SSCE non-compliance warning letter (via email and phone)
- Individuals have 180 days to achieve the required credentials, so long as they hold Cycling BC Chaperone (**WHITE**) status (or beyond) and carry a clear criminal record check, including a vulnerable sector check (e-PIC) and an active Cycling BC Membership.
- Youth Clubs and Teams will also be notified via email and phone if an affiliated sports leader has received a Non-Compliance Letter to help them support this individual
- Cycling BC coach development grants are available to reduce costs.

2nd Notification: Cycling BC Coach Membership Suspended

- Individuals found continuing to fulfil instructor and coaching roles without the appropriate accreditation beyond the 180-day grace period are subject to the following:
 - Suspension of UCI Technical (Instructor/Coach) membership
 - Suspension of Cycling BC membership in-good-standing status
- As a result:
 - Individuals are no longer covered by Cycling BC's General Liability Insurance
 - Individuals retain 24/7 Sports Accident Coverage for personal cycling activities
 - Individuals lose access to Cycling BC Coach Development Grants
 - An individual's primary Cycling BC affiliated club/team is notified by email & phone
 - All Cycling BC club/team presidents are notified by email.
 - Clubs & teams found to continue to hire this person will lose temporary access to General Liability and Board liability insurance until the individual ameliorates their non-compliant status
- To alleviate this circumstance, individuals have an additional 180 days to
 - Stop coaching/instructing until in compliance and is notified as such by Cycling BC
 - Achieve the appropriate accreditation

3rd Notification: Cycling BC General Membership Suspended

- Individuals found continuing to fulfill leadership roles beyond the 2nd 180-day period are subject to the following:
 - UCI Technical license (all types) revoked
 - Further action on a need basis, including any or all the following:
 - SafeSport report filed with the appropriate organizations
 - All Cycling BC members, clubs, and teams are notified via email

Supporting Documents:

Coach Development Grants

Cycling BC members can apply for grants to help attend NCCP courses and other professional development opportunities (fuel and course fees). Applications open on December 1st and are available on a first-come, first-serve basis.

- 5-10 grants available
- Report (photos, reflection) required with receipt submissions
- Receive 50% of submitted receipts up to a maximum of \$250 annually per recipient
- [Learn more here](#)

Coach Development & Collaboration

Cycling BC is exploring new and improved ways to collaborate with new and existing clubs to offer coach and instructor development in meaningful ways. This may include weekend training modules, developing and deploying Cycling BC's Learn to Ride and Learn to Race curriculums, and more.

Please contact us to explore how we can help your club and members achieve their leadership goals.

Coach Management System

Cycling BC members pursuing a leadership certificate can track their progress using our Coach Management System (CMS). The CMS is connected to Cycling BC's general membership database and helps streamline the training and certification journey.

The process includes purchasing your Cycling BC membership, background screening, and submitting previous learning credentials like first aid, instructor certifications, etc.

Upon registration, users receive a confirmation email with instructions to track their progress, find and start outstanding modules, upload other certificates, and update public-facing headshots at cyclingbc.net/coachaccount. In addition, update your biography at cyclingbc.net/coachprofile.

Once complete, leaders receive an automated certificate associated with this year's annual membership and are showcased to our [Accredited Coach Registry](#). As a result, leaders may fulfill a position of influence at registered Cycling BC activities.

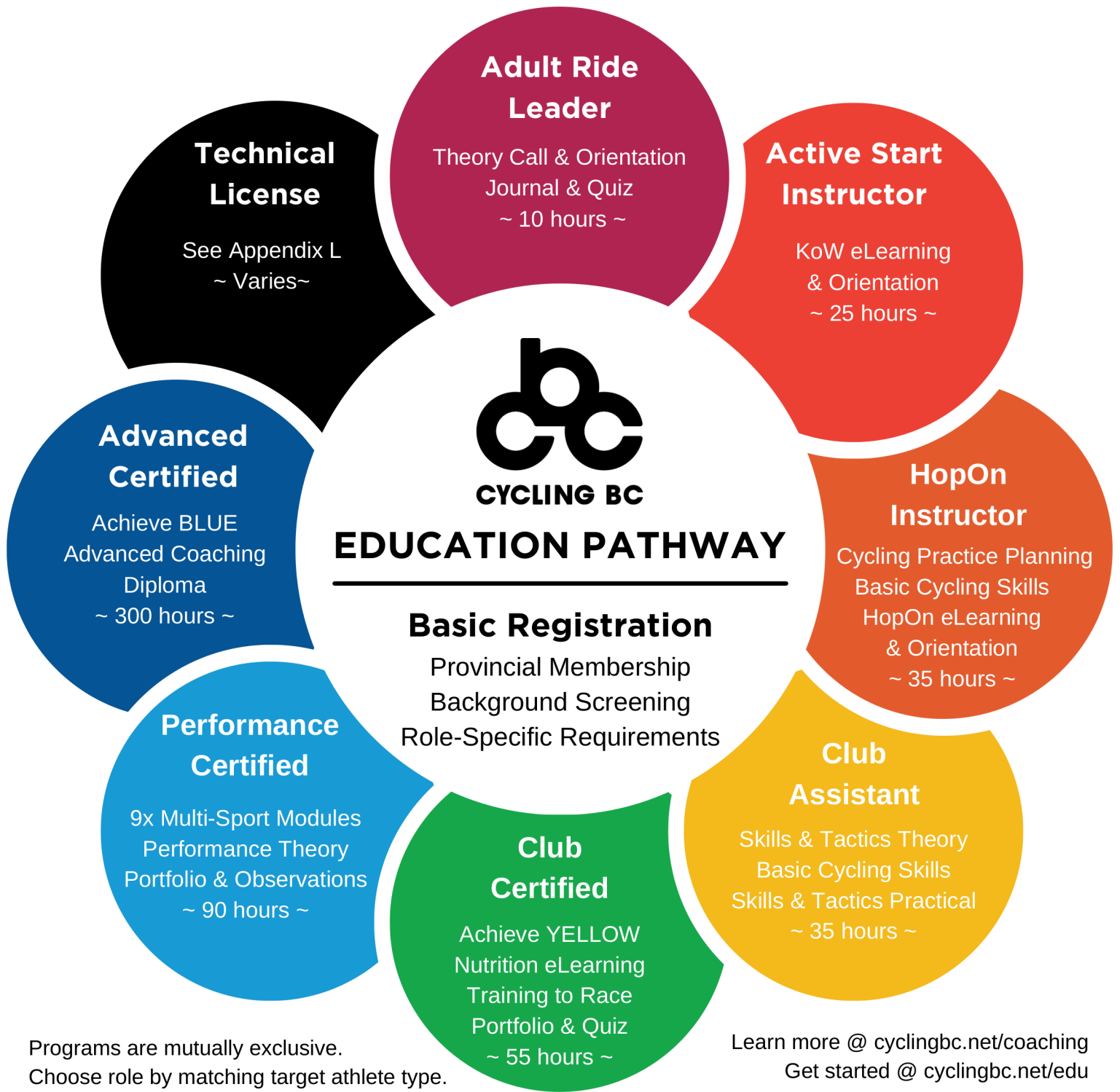
NCCP Education & Development Pathways

The remaining section of this document illustrates education and development pathways for cycling instructors, coaches, and ride leaders discussed in this SSCE policy.

The appendix includes illustrations matching education and athletic programs with phases of Long-Term development. The SSCE policy and the below illustrations aim to help match cycling athletes with qualified and confident cycling leaders.

If you have any questions about the information included in this document, please contact Cycling BC's Head of Coach Development, Ben Chaddock, via email at coaching@cyclingbc.net or by phone at 604-224-7433.





Programs are mutually exclusive.
Choose role by matching target athlete type.

Learn more @ cyclingbc.net/coaching
Get started @ cyclingbc.net/edu



COACH EDUCATION PATHWAY

HopOn Instructor

NCCP Community Coach pathway.
For Cycling BC school and community instructors only.
- 35 hours -

Club Assistant

NCCP Comp-Intro Pathway.
For youth and adult club leaders attending practices & clinics.
- 35 hours -

Club Certified

NCCP Comp-Intro Pathway.
For youth & adult leaders managing clubs, teams, and private business.
- 55 hours -

Performance Certified

NCCP Comp-Dev Pathway.
For provincial & national team leaders supporting podium pathway athletes.
- 95 hours -

Basic Requirements (COMPLETED IN-PROCESS):

- At least 14 years old
- Cycling Foundations eLearning
- Emergency Action Plan eLearning
- Making Ethical Decisions & Quiz
- First Aid (Valid Certificate)
- At least 15 years old
- Cycling Foundations
- Emergency Action Plan
- Making Ethical Decisions & Quiz
- First Aid (Valid Certificate)
- At least 16 years old
- Achieve **YELLOW CERTIFICATE**
- Nutrition eLearning
- Commit to Kids: For Coaches
- At least 18 years old
- Making Ethical Decisions & Quiz
- First Aid (Valid Certificate)
- SafeSport eLearning

1 Cycling Practice Planning

4-hour synchronous video calls, often 2 x 2 hours plus homework. Chapters include Practice Planning, Teaching & Learning.

1 Skills & Tactics Theory

10-hour synchronous video calls, often 4 x 2 hours plus homework. Chapters include Practice Planning, Teaching & Learning.

1 Skills & Tactics Theory

10-hour synchronous video call, often 4 x 2 hours plus homework. Chapters include Practice Planning, Teaching & Learning.

1 Multi-Sport Modules

Facilitated Online or Home Study by viaSport (65hr)

- Leading Drug-Free Sport & Quiz (1)
- Coaching & Leading Effectively (9)
- Managing Conflict & Quiz (8)
- Psychology of Performance (8)
- Developing Athletes Abilities (8)
- Prevention & Recovery (8)
- Performance Planning (12)
- Advanced Practice Planning (5)
- Manage a Sport Program (4)

-- Complete the above in any order --

2 Basic Cycling Skills

8-hour synchronous in-person practice teaching module, held outdoors in a field. Video challenge option available by special request.

2 Basic Cycling Skills

8-hour synchronous in-person practice teaching module, held outdoors in a field. Video challenge option available by special request.

2 Basic Cycling Skills

8-hour synchronous in-person practice teaching module, held outdoors in a field. Video challenge option available by special request.

NCCP Community Coach: Trained [CCT]

3 HopOn Modules

4-hour asynchronous eLearning, followed by 8-hour synchronous in-person practice teaching module in a field.
Available only to approved instructors.

3 Skills & Tactics Practical

8-hour synchronous in-person practice teaching module offered for each of the four sports: Mtn Bike, Road, BMX, or Track.

3 Skills & Tactics Practical

8-hour synchronous in-person practice teaching module offered for each of the four sports: Mtn Bike, Road, BMX, or Track.

Recognition of Previous Learning

PMBIA Level 1 Instructors must attend 1 outdoor module, either Basic Cycling Skills or a Skills & Tactics Practical: Mtn. Bike

PMBIA Level 2+ Instructors must only complete basic requirements and Skills & Tactics Theory.

Learn more on our website.

NCCP Community Coach: TRAINED [CCT]

4 Training to Race

12-hour synchronous video call, often 6 x 2 hours plus homework. Chapters include Design a Basic Sport Program, Basic Mental Skills. Prepares you to be a club head coach.

NCCP Introductory Coach: TRAINED [ICT]

5 Evaluation

work with Cycling BC to prepare your portfolio. Then submit the portfolio to Cycling Canada, complete an online quiz, and debrief with evaluator 30-minute video call.

NCCP Introductory Coach: CERTIFIED [ICC]

2 Performance Theory

6-hour synchronous video calls, often 3 x 2 hours plus homework. Offered once annually by Cycling Canada (Jan-Mar). Contact Cycling BC for a letter of recommendation.

NCCP Performance Coach: TRAINED [PCT]

3 Evaluation

Facilitated In-Person by Cycling Canada. Includes portfolio and observation at practice and national event.

NCCP Performance Coach: CERTIFIED [PCC]

Maintain certification by accumulating professional development points (GREEN 20 pts, BLUE 30 pts.) every five years. Approx. valued at 1 pt per hour of education.



COACH EDUCATION PRICES

NEW COACHES AND INSTRUCTORS

Please select a non-technical Cycling BC membership (cyclingbc.net/buymembership) and then register as a coach in-training (cyclingbc.net/edu)

Modules	Note	HopOn Instructor	Club Assistant	Club Certified	Performance Certified
UCI Technical License	For accredited instructors and coaches.	\$104	\$104	\$104	\$104
Background Screening	Included in Cycling BC Accreditation System.	\$25	\$25	\$25	\$25
Cycling Foundations eLearning	1hr on-demand via Cycling Canada LMS	\$15	\$15	\$15	
Emergency Action Plan eLearning	15-minute on-demand.	\$0	\$0	\$0	
Making Ethical Decisions Module	4hr video call or homestudy by viaSport.	\$70	\$70	\$70	\$70
Making Ethical Decisions Online Quiz	1hr on-demand (\$85 challenge available)				
First Aid Certificate	Valid certificate with CPR minimum.	~ \$100	~ \$100	~ \$100	~ \$100
Cycling Practice Planning	4hr (2 x 2hr) video call (Community Theory)	\$50			
Basic Cycling Skills	8hr in-person in a field or controlled space.	\$125	\$125	\$125	
HopOn eLearning & Orientation	12hr program. Application required.	\$175			
Skills & Tactics Theory	10hr (4 x 2hr) video call. (Theory A)		\$75	\$75	
Skills & Tactics Practical	8hr in-person in sport-specific space.		\$125	\$125	
Commit to Kids: For Coaches	3hr on-demand via protectchildren.ca			\$12	
Nutrition eLearning	1hr on-demand via coach.ca LOCKER.			\$20	
Training to Race	12hr (6 x 2hr) video call. (Theory B)			\$150	
Club Evaluation	Online Quiz, Portfolio & Debrief Call			\$150	
Safe Sport eLearning	1hr on-demand via coach.ca LOCKER				\$0
Performance Multi-Sport Modules	65hr (9 modules) facilitated by viaSport.				\$1070
Performance Theory	6hr (3 x 2hr) video call by Cycling Canada.				\$250
Performance Evaluation	Portfolio, Camp & Event Observation				\$400
Education Modules Only:		\$545	\$510	\$842	\$1890
Modules + Technical License + Background Screening:		\$664	\$639	\$971	\$2019

Cycling BC HopOn School Instructors only pay \$119 (Membership & Foundations).



ANCILLARY EDUCATION PATHWAYS

Parent Chaperone

For parents attending club practices and special events to support child:adult ratios
- 1 hour -

Adult Ride Leader

Designed for adult club members who wish to lead group rides.
- 10 hours -

Safety Instructor

Designed for adult leaders who wish to facilitate learn to ride and ride safety programs
- 20 hours -

LTR Instructor

Designed for instructors who wish to lead learn to ride and learn to race skills clinics.
- 50 hours -

Commissaire Official

Designed for cycling enthusiasts who wish to help officiate at sanctioned events.
- 20 hours -

Basic Requirements:

- Cycling BC Membership
- Background Screening (E-PIC)
- Safesport (eLearning)
- Cycling BC Membership
- At least 19 years old
- Cycling BC Membership
- At least 19 years old
- Cycling BC Membership
- Cycling BC Club Assistant (YELLOW CERTIFICATE)
- At least 19 years old

Special Opportunities

Cycling BC parent chaperones can access 50% discounts on NCCP coach education, including Club Theory A, to help support your child, their coach, and the club.

1 Ride Leader Training

1.5 day program including:

- Theory ZOOM (2hr)
- Outdoor Ride (3hr)

To achieve certification, submit journal & EAP.

Topics include club values, route planning, traffic safety, and group riding etiquette.

1 Safety Instructor Training

2 day program including:

- Safety theory module (3hr)
- Safety practical module (3hr)
- Learn to Ride Road6 (3hr)
- Ride Leader Module (3hr)

To achieve certification, co-instruct a live safety clinic with an experienced safety instructor and submit a reflective worksheet.

Topics include rules of the road, equipment check, skill assessment, basic road skills instruction, safety games and activities in controlled spaces, and a practice ride on open roads.

1 Learn to Ride Instructor

1.5 day program including:

- Curriculum Orientation (2hr)
- Co-Instruction at live event

2 Learn to Race Instructor

1.5 day program including:

- Curriculum Orientation (2hr)
- Co-Instruction at live event

Must attend co-instruction for each clinic instructors wish to lead, ie: Road54, Road43

1 Sport-Specific Theory C

1 day program including:

- Sport-Specific Module (7hr) facilitated by Cycling BC either in-person or online.

Chose 1 sport: BMX, CX, MTB, ROAD, TRACK

2 Mentorship Practicum

2 day program including:

- Mentorship at a live event (7hr)
- Mentorship at 2nd event (7hr)

Professional Development

Pursue additional training and credentials outlined in the Commissaire Dev. Pathway.

START HERE
cyclingbc.net/coachstart



TECHNICAL LICENSE REQUIREMENTS

Basic Requirements:

- Background Screening, including E-PIC*
- SafeSport (eLearning)

	Role-Specific Requirements	Code
Event Organizer	n/a	ORG
Commissaire	Commissaire Education & Mentorship	##C#
Team Manager (ie: Director Sportif)	Letter of Support from affiliated trade team (Provincial, National, UCI).	DS
Caravan Driver / Moto Driver	Caravan Training via Cycling Canada LMS (edu.cyclingcanada.ca) ICBC Driver's Abstract or equivalent.	DR / MD
Soigneur	Massage Therapy certificate or equivalent	SO
Mechanic	Letter of Support from place of employment or equivalent.	ME

*Sterling BackCheck includes an E-Pic check for vulnerable persons, including children. Visit cyclingbc.net/backcheck to begin.

For specialized Technical Licenses (UCI Agent, UCI Para Classifier (National or UCI), or others, contact Cycling BC.



COMMISSAIRE EDUCATION PATHWAY

PROVINCIAL C

For parents or cycling enthusiasts who wish to help officiate at sanctioned events
~20 hours ~

PROVINCIAL B

For officials who wish to further develop their skills and fulfill additional responsibilities
~20 hours ~

PROVINCIAL A

For nominated officials pursuing President of the Commissaires Panel (PCP)
~20 hours ~

NATIONAL

For nominated officials pursuing commissaire positions at National Championship events.
~20 hours ~

NAT. ELITE

For nominated officials pursuing PCP positions at National Championship events.
~30 hours ~

UCI

For nominated officials pursuing PCP positions at international events.
~100 hours ~

Basic Requirements:

- UCI Technical License (cyclingbc.net/membership)
- Background Screening, including E-PIC
- SafeSport (eLearning)
- Cycling BC nomination
- Cycling Canada nomination
- Cycling BC letter of support
- Cycling Canada nomination
- Available in Switzerland ONLY

ROAD

Theory C ROAD

4-hour module facilitated via ZOOM by Cycling BC. Mentorship at 2 events.

Officiate _ events

over 1-2 years to learn through experience. Fulfill different positions.

Theory A ROAD

4-hour module facilitated via ZOOM by Cycling BC. Fulfill the PCP position.

National ROAD

2-day module & exam module facilitated in-person by Cycling Canada.

Nat. Elite ROAD

2.5-day module & exam module delivered in the America's by the UCI.

UCI ROAD

10-day module, exams, & PCP observation at an international event.

TRACK (Velodrome)

Theory C TRACK

4-hour module facilitated via ZOOM by Cycling BC. Mentorship at 2 events.

Officiate _ events

over 1-2 years to learn through experience. Fulfill different positions.

Theory A TRACK

4-hour module facilitated via ZOOM by Cycling BC. Fulfill the PCP position.

National TRACK

2-day module & exam module facilitated in-person by Cycling Canada.

Nat. Elite TRACK

2.5-day module & exam module delivered in the America's by the UCI.

UCI TRACK

10-day module, exams, & PCP observation at an international event.

BMX

Theory C BMX

4-hour module facilitated via ZOOM by Cycling BC. Mentorship at 2 events.

Officiate _ events

over 1-2 years to learn through experience. Fulfill different positions.

Theory A BMX

4-hour module facilitated via ZOOM by Cycling BC. Fulfill the PCP position.

National BMX

2-day module & exam module facilitated in-person by Cycling Canada.

Nat. Elite BMX

2.5-day module & exam module delivered in the America's by the UCI.

UCI BMX

10-day module, exams, & PCP observation at an international event.

MOUNTAIN BIKE

Theory C MTB

4-hour module facilitated via ZOOM by Cycling BC. Mentorship at 2 events.

Officiate _ events

over 1-2 years to learn through experience. Fulfill different positions.

Theory A MTB

4-hour module facilitated via ZOOM by Cycling BC. Fulfill the PCP position.

National MTB

2-day module & exam module facilitated in-person by Cycling Canada.

Nat. Elite MTB

2.5-day module & exam module delivered in the America's by the UCI.

UCI MTB

10-day module, exams, & PCP observation at an international event.

CYCLO CROSS

Theory C CX

4-hour module facilitated via ZOOM by Cycling BC. Mentorship at 2 events.

Officiate _ events

over 1-2 years to learn through experience. Fulfill different positions.

Theory A CX

4-hour module facilitated via ZOOM by Cycling BC. Fulfill the PCP position.

National CX

2-day module & exam module facilitated in-person by Cycling Canada.

UCI CX

10-day module, exams, & PCP observation at an international event.

PARA

National PARA

2-day module & exam module facilitated in-person by Cycling Canada.

UCI PARA

10-day module, exams, & PCP observation at an international event.



COACH DEVELOPER PATHWAY

NCCP Learning Facilitator

*For certified NCCP coaches
nominated to facilitate workshops
~ 60 hours ~*

NCCP Coach Evaluator

*For certified NCCP coaches nominated to facilitate
portfolio evaluation and in-person observations
~ 60 hours ~*

NCCP Master Coach Developer

*For certified Learning Facilitators & Coach Evaluators
nominated to develop, mentor, and evaluate LFs & CEs
~ 250 hours ~*

Basic Requirements:

- UCI Technical License (cyclingbc.net/membership)
- NCCP Comp-Introduction or Competition-Development Certification
- Nomination by PTSO, NSO, or Master Coach Developer

1 LF Core Training

Facilitated Online or
In-Person (8hrs) by viaSport
*Use Cycling BC Coach Developer Journal
to reflect on the process and track progress.

1 CE Core Training

Facilitated Online or
In-Person (8hrs) by viaSport
*Use Cycling BC Coach Developer Journal
to reflect on the process and track progress.

1 MCD Core Training

Facilitated Online or
In-Person (8hrs) by viaSport
*Use Cycling BC Coach Developer Journal
to reflect on the process and track progress

2 Content-Specific Delivery

Facilitated Online or In-Person by
Cycling BC or Cycling Canada (6hrs)
Review learning materials with an MCD mentor
and/or shadow at an in-person event.

2 Content-Specific Delivery

Facilitated Online or In-Person by
Cycling BC or Cycling Canada (6hrs)
Review sample portfolios and design a debrief
script unique to the portfolio under evaluation.

2 Content-Specific Delivery

Facilitated In-Person by viaSport,
Cycling BC, or Cycling Canada (6hrs).
Work with a mentor and review MCD roles &
responsibilities when evaluating LFs and CEs.

3 Co-Delivery

Facilitate an online or in-person module
with an experienced LF or MCD mentor.
Complete a pre and post-briefing, and
reflect using the Cycling BC Coach Developer journal.

3 Co-Evaluation

Conduct a portfolio evaluation with
a cycling coach under evaluation, with oversight from an
experienced CD or MCD mentor.
Complete a post-evaluation debrief with mentor.

3 Co-Delivery

Facilitated In-Person by viaSport,
Cycling BC, or Cycling Canada (6hrs)
during an LF or CE evaluation.
Shadow MCD and debrief.

4 Trained Status

If the co-delivery is passed,
work as a trained LF and facilitate at least 2 deliveries on
your own before pursuing certification.

4 Trained Status

If the co-evaluation is passed,
work as a trained CE and evaluate at least 3 portfolios.
Collect positive feedback forms.

4 Trained Status

If the co-delivery is passed,
work as a trained-MCD and mentor at least 6 different
coach developers over 2-5 years.

5 Evaluation

A 4-hour observation by a certified MCD
during a live event. Includes pre & post-briefing.

5 Evaluation

Submit the CE portfolio, including 3 positive
feedback forms and a self-assessment.

5 Evaluation

Submit the MCD portfolio, including 6 feedback forms,
a self-assessment. Complete a debrief.